



## Contact US

Website: <https://www.switcgearfactory.com/>

LinkedIn: [www.linkedin.com/company/dsj-electrical](https://www.linkedin.com/company/dsj-electrical)

Youtube: [www.youtube.com/@DSJElectric](https://www.youtube.com/@DSJElectric)

Email: [info@dsjpowerlink.com](mailto:info@dsjpowerlink.com)

Address: FLC Center, Chaoyang, Beijing, China



## -Generator Circuit Breaker-

### Product Catalog

DSJ Electrical Co.,Ltd





## About DSJ

### Building Power, Building Trust: **42 Years of Excellence**

Founded in 1983, DSJ has established itself as a leading force in China's electrical distribution industry, with 42 years of expertise in both medium-voltage and low-voltage electrical products.

As an outstanding enterprise, DSJ boasts independent research, development, production, and sales capabilities, ensuring that we can meet customers' needs with the fastest delivery and the highest level of customization. Our workforce consists of over 300 employees, including 50 senior management professionals, 30 experienced engineers, 8 senior designers, and 5 senior technicians.

We specialize in the manufacturing of distribution, circuit protection, and photovoltaic products that exceed both national and international quality standards. Over the past 40 years, DSJ has provided high-quality, safe electrical products to public facilities, large enterprises, and residential sectors worldwide, with one of the lowest return rates in the industry.

As a well-recognized Chinese brand, DSJ is dedicated to upholding our brand integrity. We adhere to the core philosophy of "Quality First, Customer Priority, and Integrity at the Core," striving to bring premium Chinese power equipment and exceptional service capabilities to customers worldwide.

#### Core Ideology

**Quality First**

**Customer Priority**

**Integrity at the Core**

 **40+**  
Years of Excellence

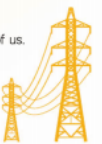
Established in 1983, DSJ has delivered trusted solutions for over four decades, solidifying its position as a pioneer in electrical equipment.

 **15,000+**  
Square Meters of Facility

Strong manufacturing capabilities, with the capacity to produce 8,000 units per month.

 **\$108**  
Million in Revenue

The continuous growth in sales volume demonstrates the market's recognition of us.



# Factory Introduction



DSJ is a financially robust company with a registered capital of **7.84 million USD** and a facility spanning more than **15,000 square meters**.

Our production capabilities are supported by **30 units** of intelligent product testing and debugging equipment, **50 machine tools**, and **6 automated production lines**.

DSJ is also home to four innovation laboratories, holding more than **60 national invention patents**.

**Crafting Quality Electrical Products for Over 40 Years**



# Honors and Certifications

• We are holding more than 60 national invention patents

## Invention Patent



## Utility Model Patent



• We have been awarded numerous prestigious national-level honors



**Elaborately Build World-Class  
Solution for Smart Electric System**

Smart Creating of High Premium Products,  
Innovative Services and Achieving Customers



## Contents

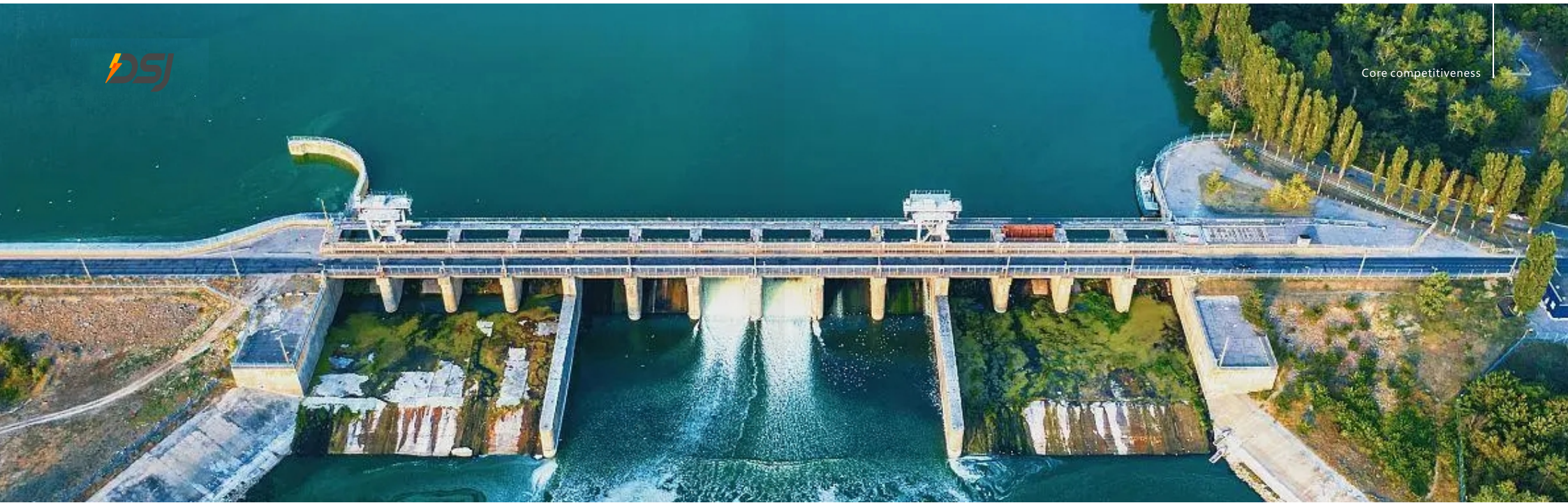
### GCB Series

Complete set of Large-capacity GCB for 1000MW-1400MW Units (190kA)..... 01

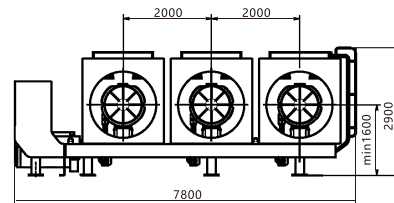
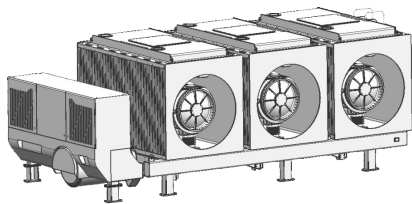
Complete set of Large-capacity GCB for 800-1000MW Units (170kA)..... 03

Complete set of Large-capacity GCB for 600-800MW Units (160kA)..... 05

Complete set of Large Capacity GCB for 200-450MW Units (100kA)..... 07



### Complete set of Large-capacity GCB for 1,000-1,400MW Units (190kA)

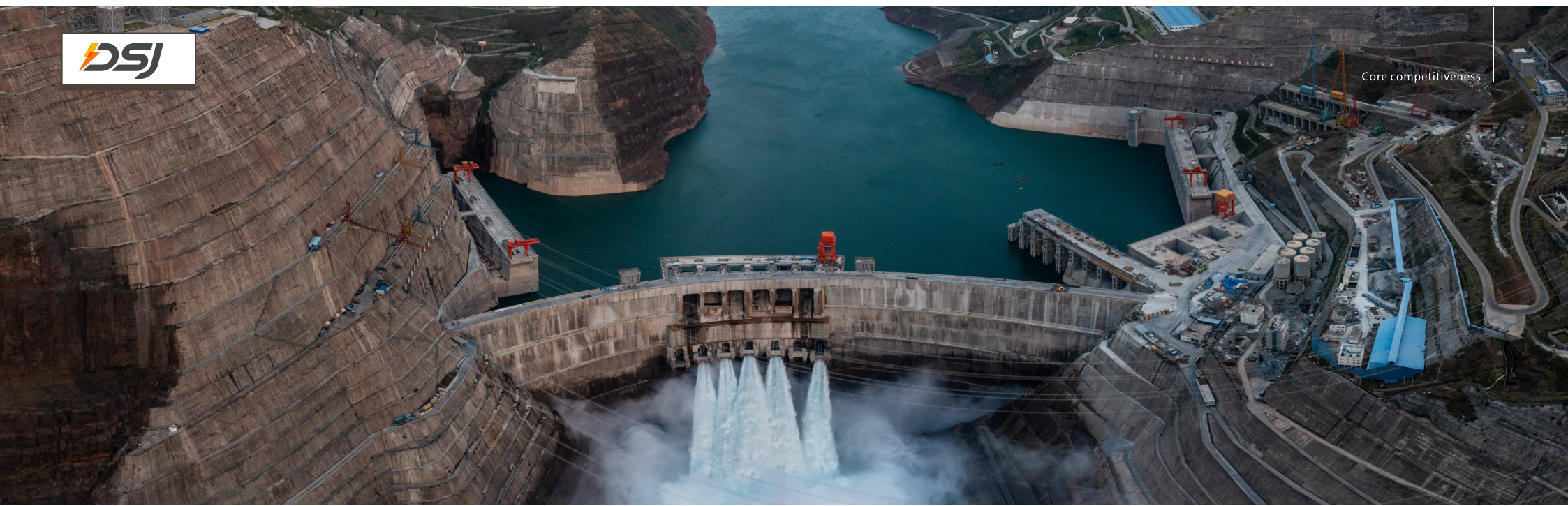


- ◆ **High long-term flow-current capacity** The application of efficient heat dissipation structure and high conductivity materials, with the rated flow-current capacity of 40000A
- ◆ **Excellent breaking performance** Rated short-circuit breaking current AC component is 195kA(R.M.S), electrical life up to 4 times
- ◆ **Strong dynamic and thermal stability** Rated short-time withstand current is 210kA/3s, rated peak withstand current is 600kA
- ◆ **Small structure arrangement** Small structure arrangement

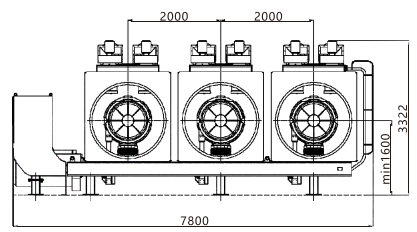
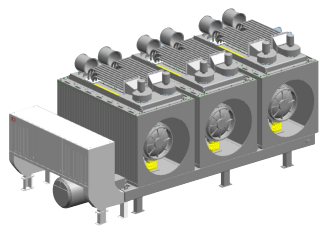
- The distance between phases of CB is 2,000mm
- The first set of 190kA GCB has been successfully applied to Pakistan K2K3 Nuclear Power Plant.

Main Technical Parameters of Complete set of Large-capacity GCB for 1,000-1,400MW Units (190kA)

S/N	Item name	Unit	Parameters
1	Rated voltage	kV	27
2	Rated current	A	40,000 (IPB Cooling)
3	Rated frequency	Hz	50
4	Rated short-time frequency withstand voltage (1 min)	kV	80
5	Rated lightning impulse withstand voltage (peak)	kV	150
6	Rated system source short-circuit breaking current	kA	195, DC component 85%
7	Rated generator source short-circuit breaking current	kA	135, DC component 130%
8	Full breaking time	ms	≤70
9	Rated closing/opening time for disconnect/earthing switch	s	≤4
10	Rated short-circuit making current (peak)	kA	535
11	Rated short time withstand current/duration	kA/s	210/3
12	Rated peak withstand current	kA	600
13	Number of mechanical operations	Times	CB: 6,000 DS/ES: 10,000
14	Electrical endurance	Times	4
15	Weight	kg	14500



**Complete set of Large-capacity GCB for 800-1,000MW Units (170kA)**



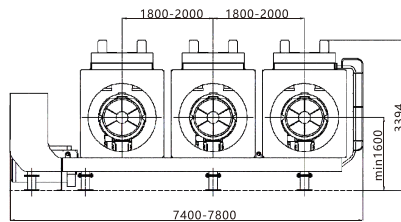
- ◆ **High long-term flow-current capacity**    rated up to 28,000A/40,000A (IPB cooling).
  - ◆ **High number of electrical life cycles**    5 times, 4 as standard.
  - ◆ **Excellent breaking performance**    AC component (r.m.s) 170kA, DC component up to 91%.
- The distance between phases of CB is 2,000mm.
  - The first set of 170kA GCB has been successfully applied to Baihetan Hydropower Station.

**Main Technical Parameters of Complete set of Large-capacity GCB for 800-1,000MW Units (170kA)**

S/N	Item name	Unit	Parameters
1	Rated voltage	kV	30
2	Rated current	A	26,000 Natural cooling 28,000 Forced air cooling 40,000 (IPB Cooling)
3	Rated frequency	Hz	50
4	Rated short-time frequency withstand voltage (1 min)	kV	80
5	Rated lightning impulse withstand voltage (peak)	kV	150
6	Rated system source short-circuit breaking current	kA	170, DC component 91%
7	Rated generator source short-circuit breaking current	kA	135, DC component 130%
8	Full breaking time	ms	≤70
9	Rated closing/opening time for disconnect/earthing switch	s	≤4
10	Rated short-circuit making current (peak)	kA	466
11	Rated short time withstand current/duration	kA/s	210/3
12	Rated peak withstand current	kA	600
13	Number of mechanical operations	Times	CB: 6,000 DS/ES: 10,000
14	Electrical endurance	Times	5 cycles (4 times as standard)
15	Weight	kg	15000



**Complete set of Large-capacity GCB for 600-800MW Units (160kA)**



- ◆ **High long-term flow-current capacity**    rated up to 27,000A.
- ◆ **High insulation level**                    Meeting the altitude of 3,000 meters.
- ◆ **Excellent breaking performance**        AC component (r.m.s) 160kA, DC component up to 86%.

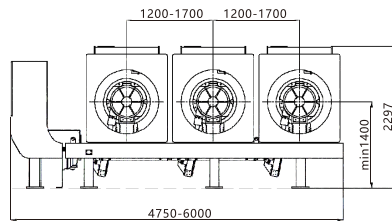
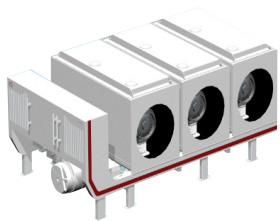
- The distance between phases of the CB can chosen is 1,800mm~2,000mm.
- Since the first set was successfully applied to Xiangjiaba Hydropower Station in 2013, dozens of units have been supplied to various types of power plants.

**Main Technical Parameters of Complete set of Large-capacity GCB for 600-800MW Units (160kA)**

S/N	Item name	Unit	Parameters
1	Rated voltage	kV	24
2	Rated current	A	25,000 Natural cooling 27,000 Forced air cooling
3	Rated frequency	Hz	50
4	Rated short-time frequency withstand voltage (1 min)	kV	80
5	Rated lightning impulse withstand voltage (peak)	kV	150
6	Rated system source short-circuit breaking current	kA	160, DC component 86%
7	Rated generator source short-circuit breaking current	kA	130, DC component 130%
8	Full breaking time	ms	≤70
9	Rated closing/opening time for disconnect/earthing switch	s	≤4
10	Rated short-circuit making current (peak)	kA	440
11	Rated short time withstand current/duration	kA/s	Main circuit 160/2 Earthing circuit 160/1
12	Rated peak withstand current	kA	440
13	Number of mechanical operations	Times	CB: 5,000 DS/ES: 10,000
14	Electrical endurance	Times	3
15	Weight	kg	14000



**Complete set of Large Capacity GCB for 200-450MW Units (100kA)**



- ◆ **High long-term flow-current capacity**    Rated up to 15,000A.
- ◆ **High insulation level**    Up to 4,000m above sea level.
- ◆ **High electrical life**    8 times, 4 times as standard.
- ◆ **Excellent breaking performance**    AC component (r.m.s) 100kA, DC component up to 82%.

- The distance between phases of the CB can chosen is 1,200mm~1,700mm.
- Since the first unit was successfully applied to Yangfanggou Hydropower Station in 2019, many of the similar types of products have been supplied to various of power plants.

**Main Technical Parameters of Complete set of Large-capacity GCB for 200-450MW Units (100kA)**

S/N	Item name	Unit	Parameters
1	Rated voltage	kV	24
2	Rated current	A	13500-15000
3	Rated frequency	Hz	50
4	Rated short-time frequency withstand voltage (1 min)	kV	65
5	Rated lightning impulse withstand voltage (peak)	kV	125
6	Rated system source short-circuit breaking current	kA	100, DC component 82%
7	Rated generator source short-circuit breaking current	kA	80, DC component 110%
8	Full breaking time	ms	≤60
9	Rated closing/opening time for disconnect/earthing switch	s	≤4
10	Rated short-circuit making current (peak)	kA	275
11	Rated short time withstand current/duration	kA/s	100/3
12	Rated peak withstand current	kA	300
13	Number of mechanical operations	Times	10000
14	Electrical endurance	Times	8 cycles (4 times as standard)
15	Weight	kg	9500